

Producing your edTPA clip in iMovie

This document will help you to produce your selected video clip using iMovie for the Mac. Before beginning you should move the video clip from your recording device to your computer.

This process can take up to or more than half an hour if you have a long video segment, and you'll want to make sure that you save your movie file after producing it. Keep in mind that the video format must be of an [acceptable format](#). Following these directions will produce your video clip in the M4V format, which is a Pearson accepted edTPA format.

Before you begin

1. Watch your full video clip and note the approximate beginning and end time of the clip you will want to use.

2. If you are doing this work on a school, lab, or borrowed computer, then make sure to delete any movie files from the computer when you are finished.

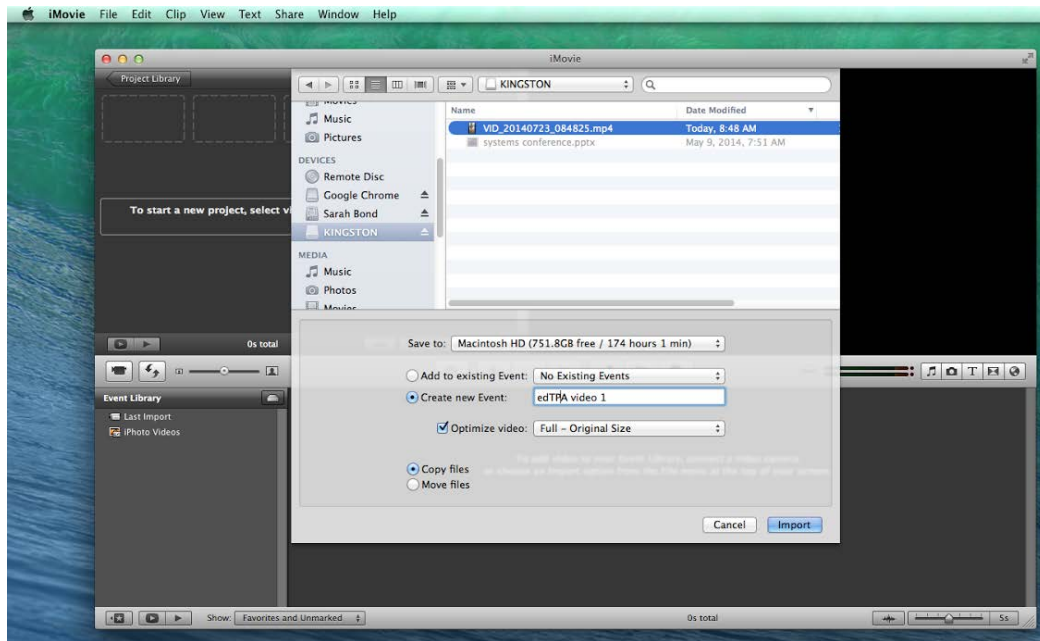
3. Make sure that you have all of your video permission forms.

4. When producing your video be careful to not use any setting that automatically publishes your edTPA video to YouTube, facebook, or other any public or non-secure site.

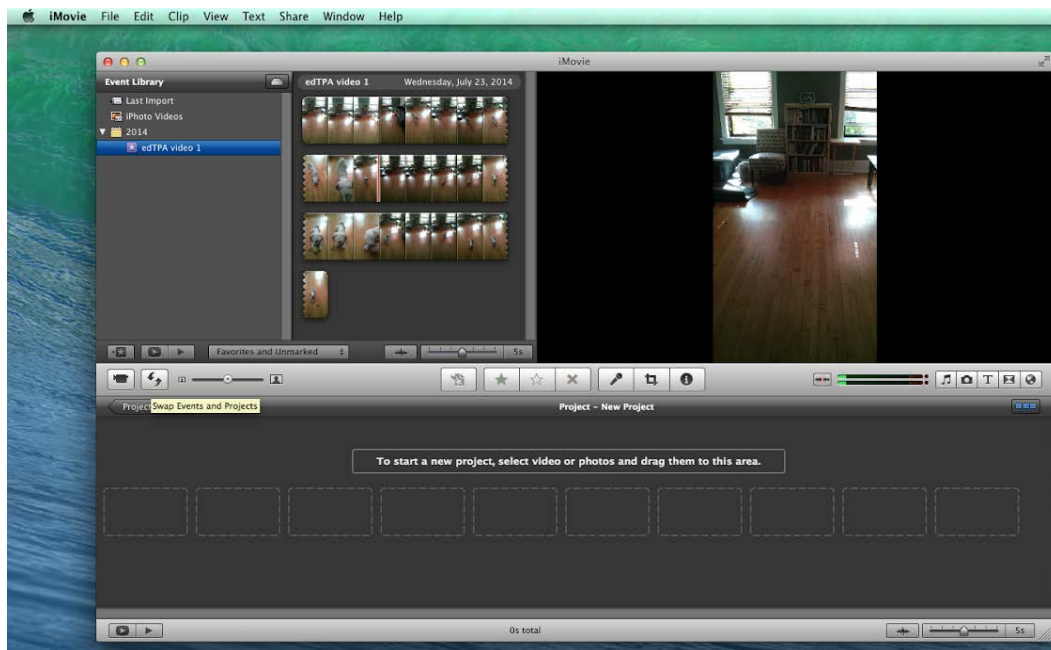
Importing the movie clip

1. In the **File** menu, click **Import** and then select **Movies**

2. Locate your movie clip and select it. Name your Event and then click the **Import** button. This process will take about 2 minutes for a 200MB movie clip.



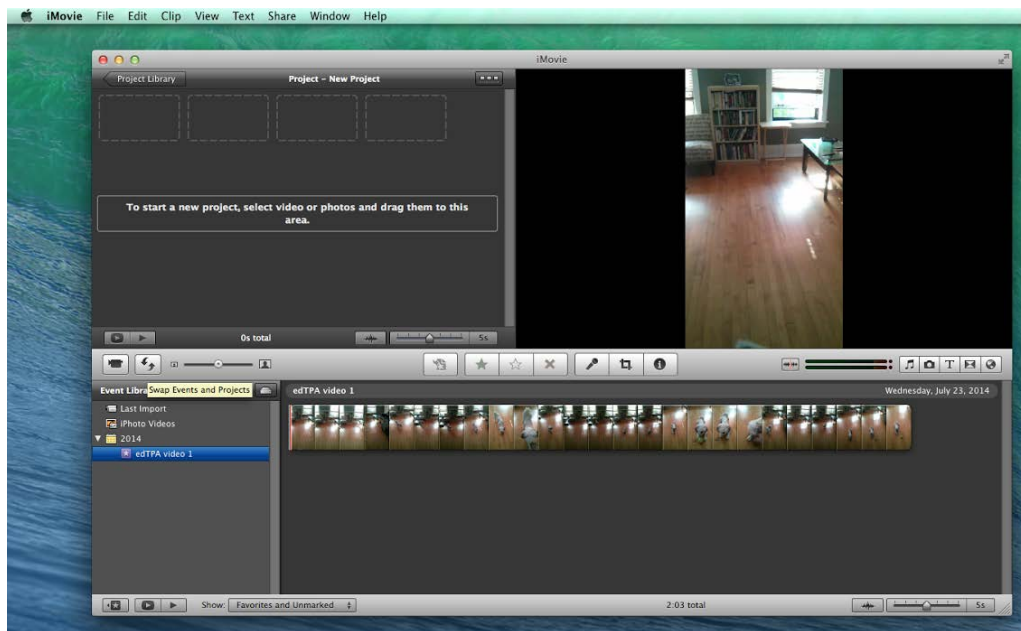
3. The movie clip should now appear in the *Event area* in iMovie.



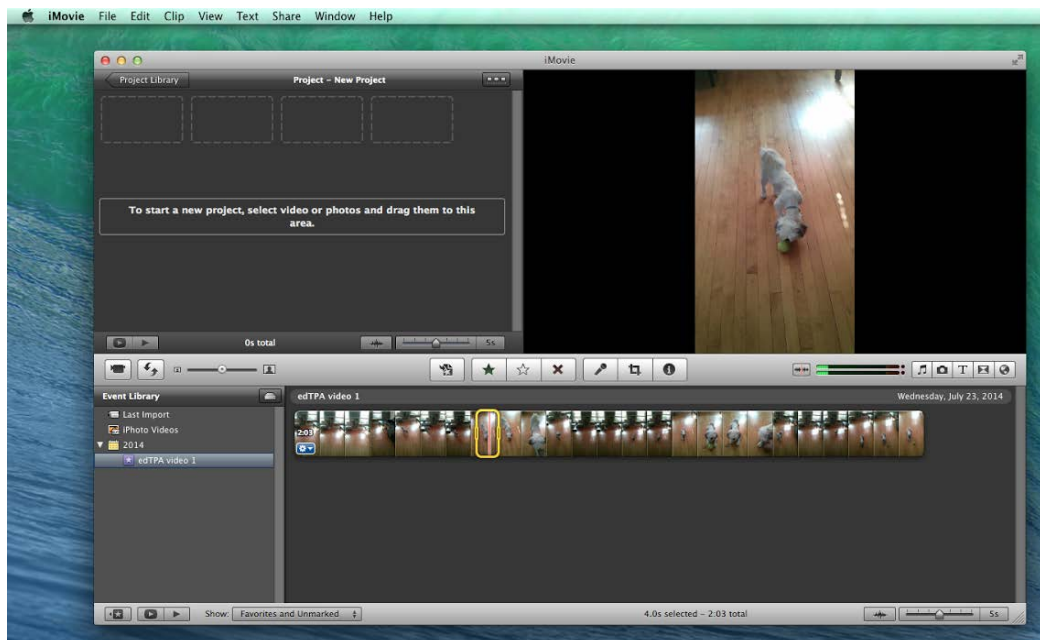
Selecting your movie clip

1. Begin by clicking the **swap** button to swap your *Project* and *Event areas*. Doing this will give you more area to work with, and make selecting your video clip easier.

“Used with permission by: Matthew Belskie, Educational Technology Coordinator, University of Wisconsin-Milwaukee.”

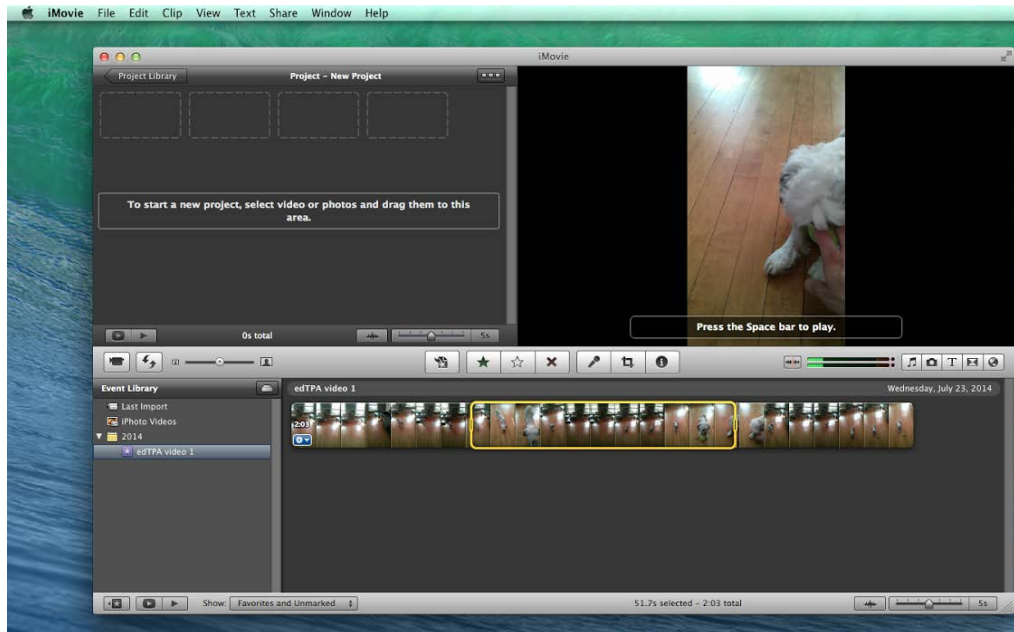


2. Click the clip anywhere inside of the section you will want to use to show the *frame selector*, which looks like a yellow rectangle.

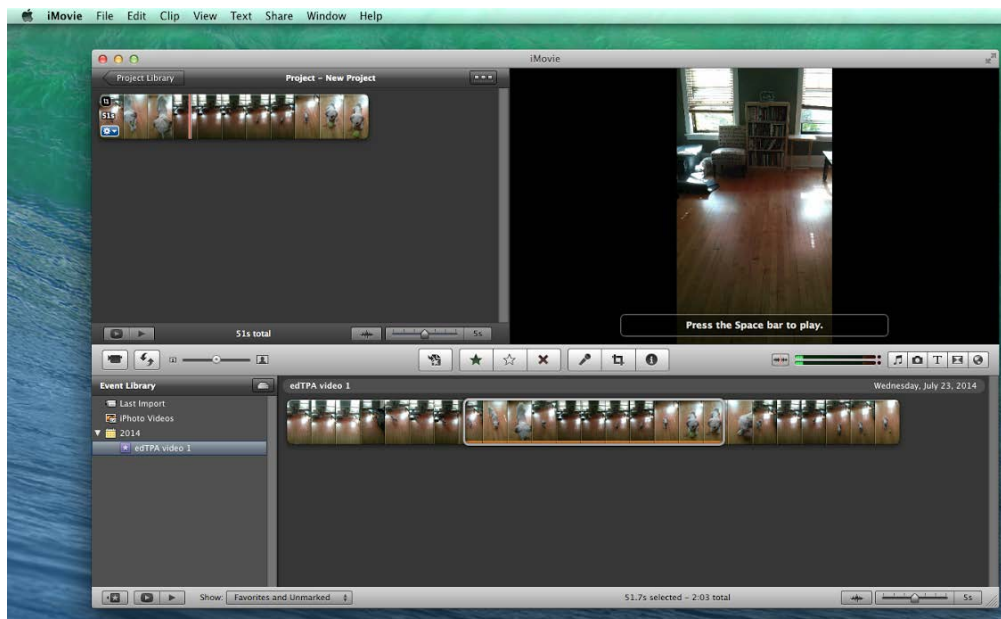


3. Drag the front and end sections of the frame selector to match the start and end times of your clip selection.

NOTE: Being familiar with your video and knowing the segment that you want to use ahead of this step will save you a lot of time.



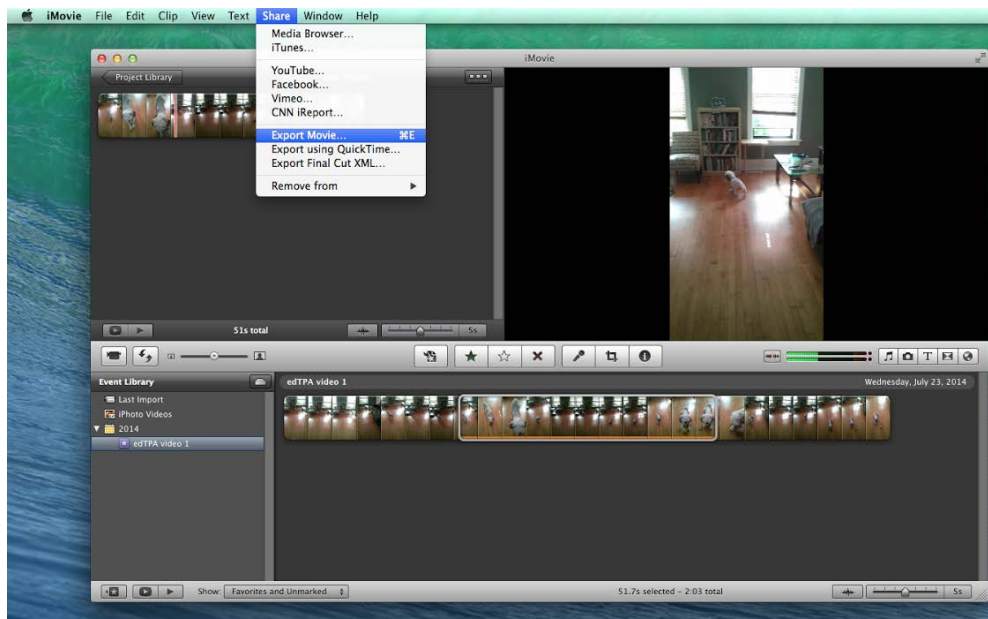
4. Mouse over the selected area until you see a Hand icon, click the selection, and drag it to the *Project* area of iMovie. After doing this, note the full running time of the video in your project area.



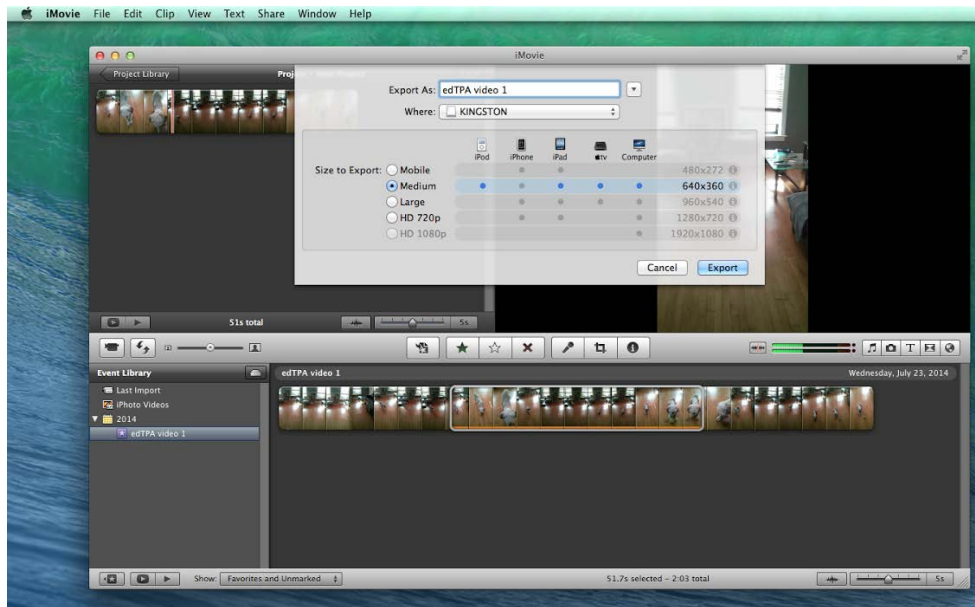
“Used with permission by: Matthew Belskie, Educational Technology Coordinator, University of Wisconsin-Milwaukee.”

Producing the movie clip

1. Click **Share** in the file menu and choose **Export Movie**



2. From the list of options choose **Medium**. Give your file a name, choose the desired save location, and then click **Export**.



3. After the movie has finished exporting, double-check your movie clip by watching the entire clip.

Additional support

If you have need of further help then please contact the UWO Help Desk at 920-424-3020 or visit them at Dempsey Room 207.